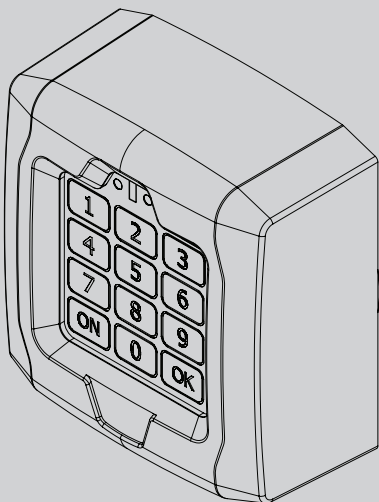




D812039 00100_04 29-05-15

PROGRAMMABLE DIGITAL PUSH BUTTON PANEL

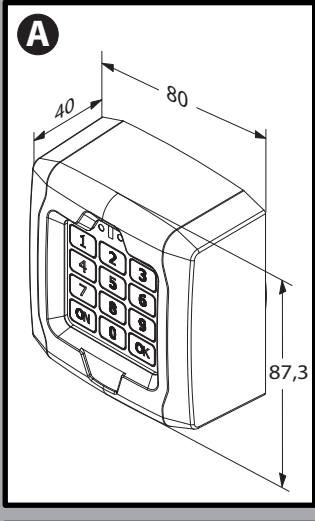


Q.BO TOUCH

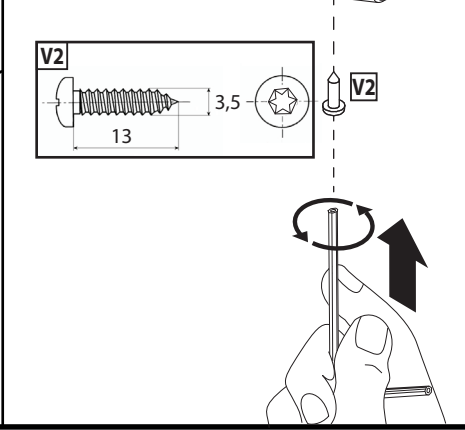
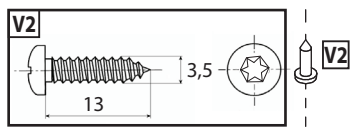
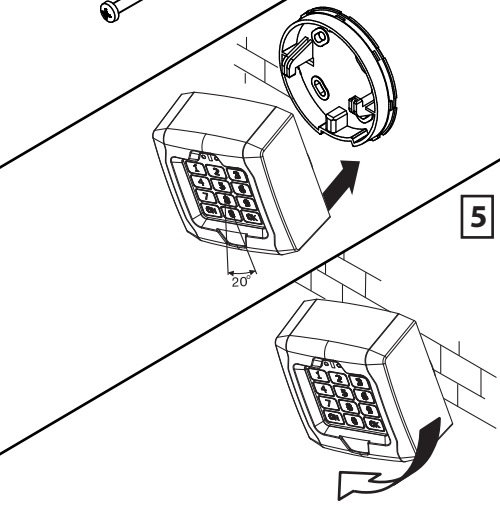
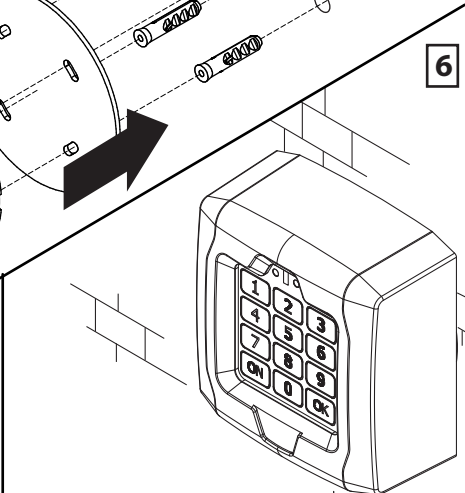
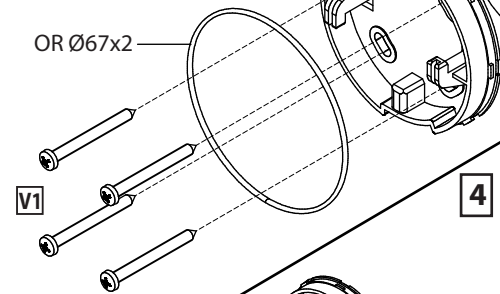
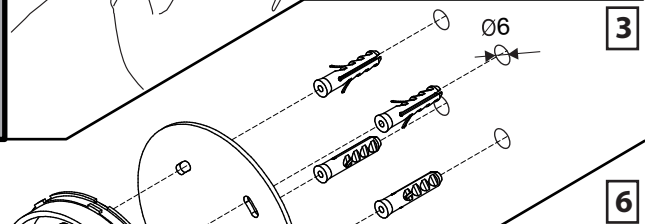
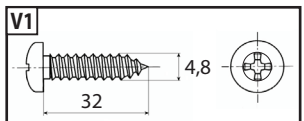
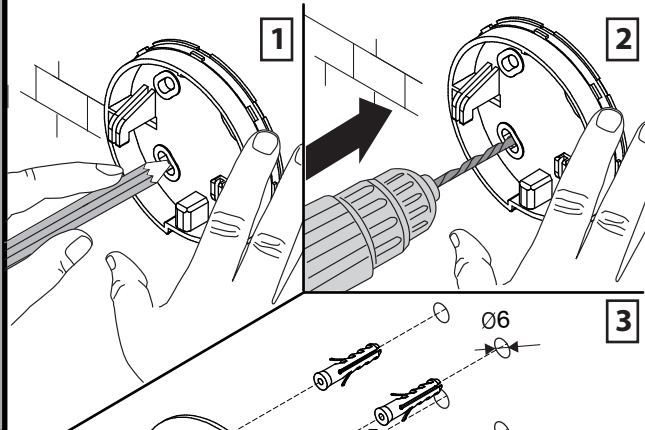
BFT



AZIENDA CON SISTEMA DI GESTIONE
INTEGRATO CERTIFICATO DA DNV
= UNI EN ISO 9001:2008 =
UNI EN ISO 14001:2004

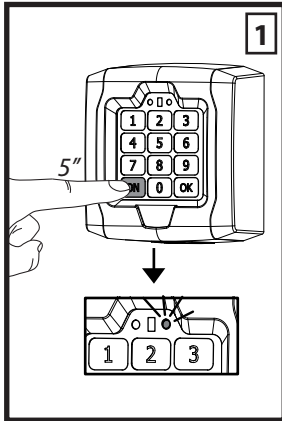


B QUICK INSTALLATION





MEMORIZING ON CONTROL UNIT



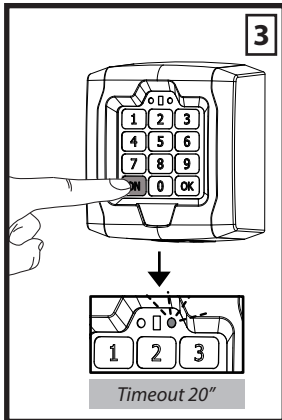
2

Timeout 20"

(x 4)

Key in code:	1111,, 0000.

--> 1111= CH 1 --> 6666= CH 6
 --> 2222= CH 2 --> 7777= CH 7
 --> 3333= CH 3 --> 8888= CH 8
 --> 4444= CH 4 --> 9999= CH 9
 --> 5555= CH 5 --> 0000= CH 0



4

Control units with display

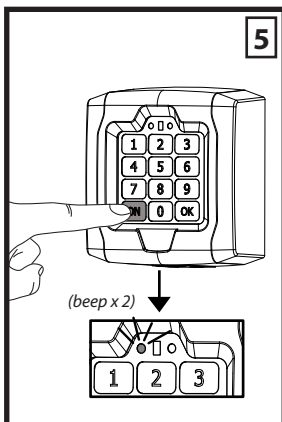
rAd io → OK → RGL. StArt → OK →

Timeout 5 min.

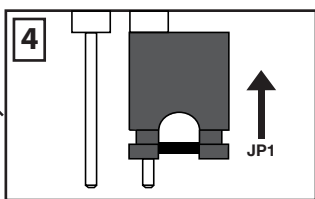
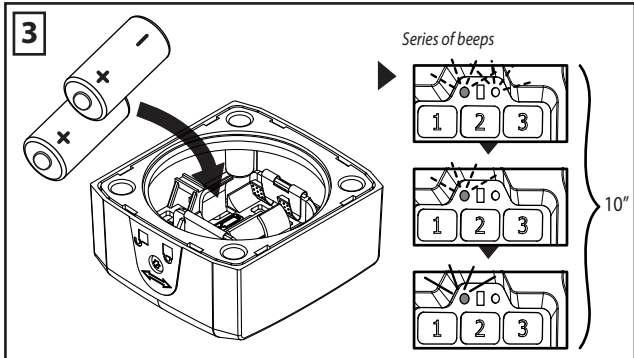
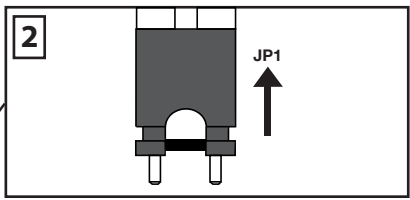
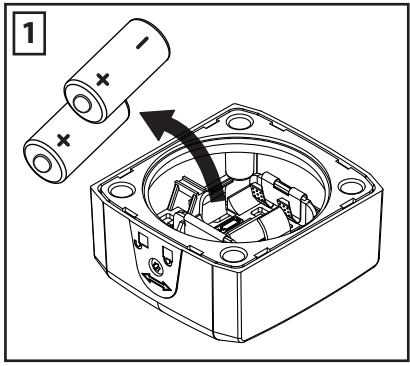
Receivers

Comply with the instructions relating to the receiver/control unit used!

SW1

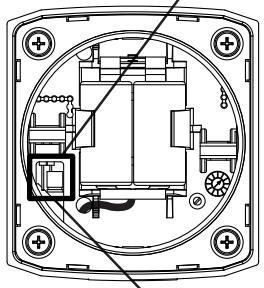


D TOTAL CANCELLATION OF CODES



LED state: unlit.

5 MEMORY CANCELLED



1) GENERAL OUTLINE

The Q.BO TOUCH is a 10-channel transmitter. Each channel is associated with a code to be typed on the keyboard.

The transmitter is powered by batteries, therefore no wired electrical connection is needed. The Q.BO TOUCH is provided with touch keys; for any operation, it must be activated by means of the ON key. It can manage up to 100 different CODES (each CODE consists of a sequence of min. 4 and max. 7 figures) and up to 10 different activation CHANNELS, each CHANNEL

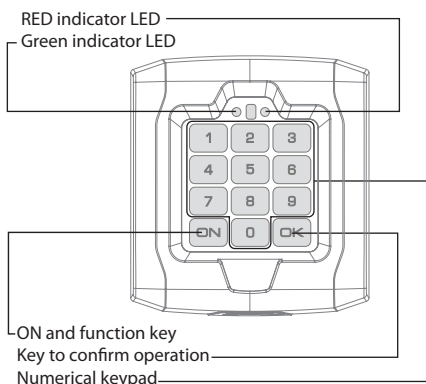
corresponding to a different control unit installed (e.g. sliding gate opening with channel 1 and overhead door opening with channel 2). The Q.BO TOUCH has a sensor which, in case of poor light, activates keyboard lighting to make it easier to enter the code.

For reasons of system safety, in order to add an enabled code, it is necessary to enter a password (default 1234). Such password can be changed and must be remembered by the user.

WARNING: Keep the anti-tamper Allen key provided in the kit.

SIGNAL INDICATIONS

Signal Heard	Meaning
1 Short beep	Indicates that a key has been pressed
1 Long beep	Code entered correct/ memorisation on control unit
3 Short beeps	Code incorrect/error
RED led fixed after the correct code is entered	Battery exhausted



2) TECHNICAL SPECIFICATIONS

Batteries	2X CR123A min.1400mAh
Working temperature:	-10 +55 °C
No. of channels:	10
Frequency:	433.92 MHz
Transmission:	Rolling Code
Range:	100m in open field (*)
Degree of protection:	IP55
Dimensions	Fig. A

(*) The range can be affected by environmental and installation conditions.

3) INSTALLATION (Fig.B points 1-6)

WARNING: think carefully about the installation site. Structures made from ferrous material could have an adverse effect on the Q.BO TOUCH's operation.

4) MEMORIZING ON CONTROL UNIT/RECEIVER (Fig.C points 1-5).

To control a number of control units separately, use a different channel for each, entering the default codes.

Once that is done, change the codes.

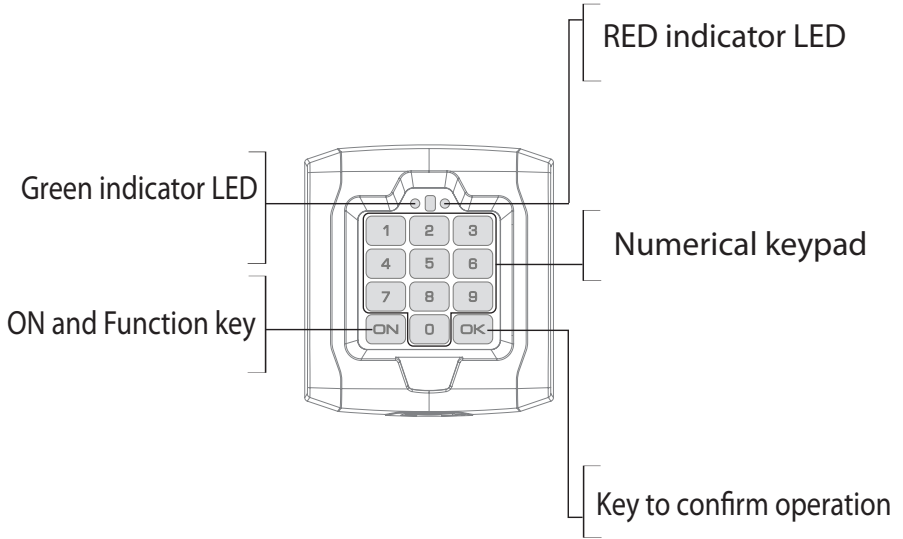
- Change 1111 to 56561
- Change 2222 to 56562
- Change 3333 to 56563

This makes it easier to remember the code as 5656 followed by the function number (1 for sliding gate, 2 for overhead door A, 3 for overhead door B), therefore:

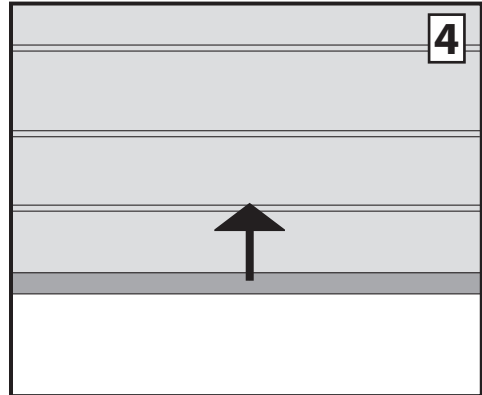
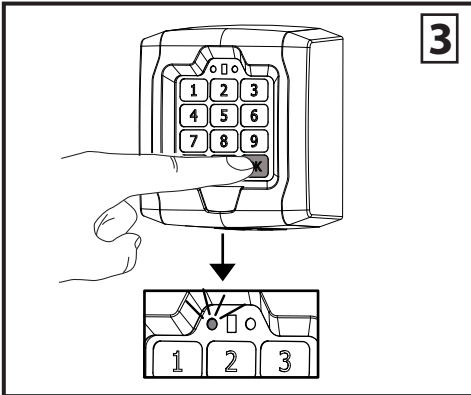
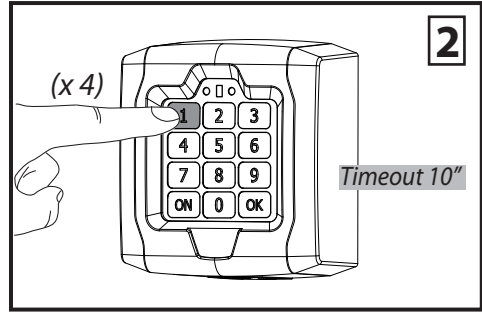
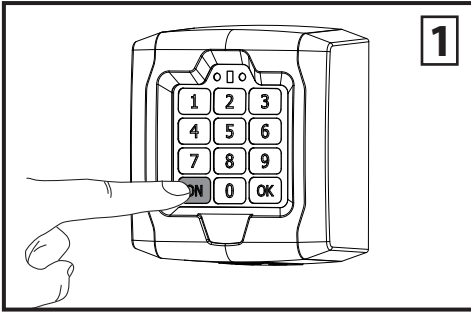
- ON -> 56561 OK -> opens the sliding gate
- ON -> 56562 OK -> opens overhead door A
- ON -> 56563 OK -> opens overhead door B

5) TOTAL DELETION OF CODES (Fig.D points 1-5)

Following the total deletion of all codes, Q.BO TOUCH will need to be memorized again on the control unit.



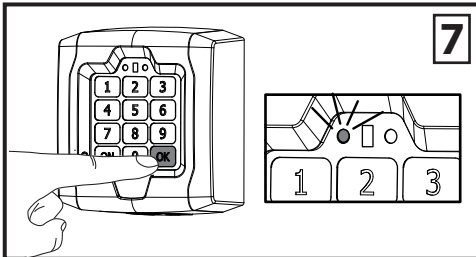
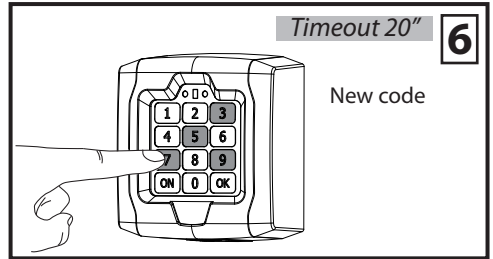
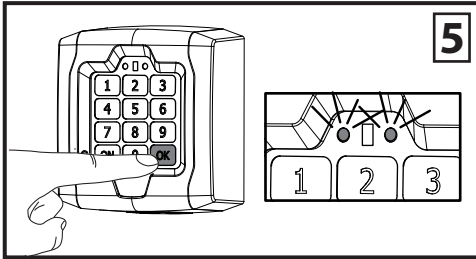
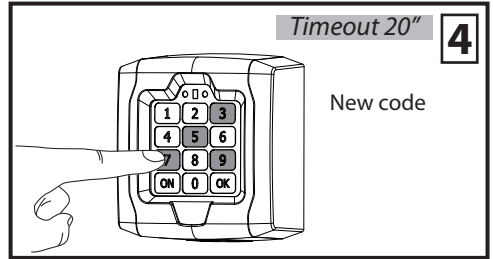
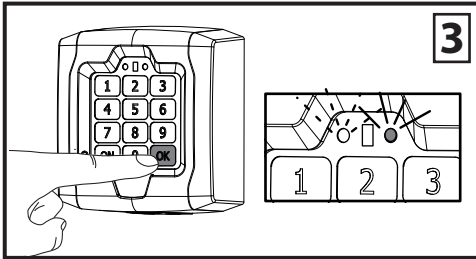
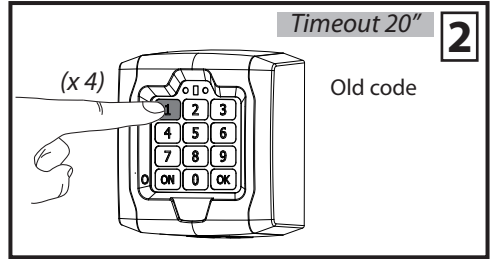
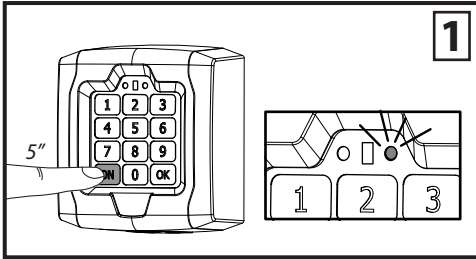
NORMAL USE



WARNING: Q.BOTOUCH will lockout after 3 consecutive incorrect codes are entered and will not accept further codes for 90 seconds. If another incorrect code is entered, Q.BO TOUCH will lockout at the first attempt.

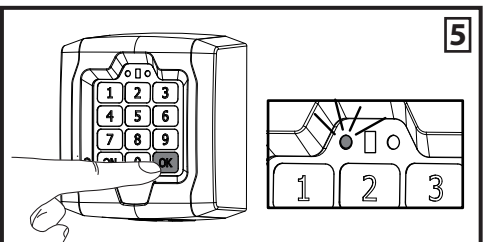
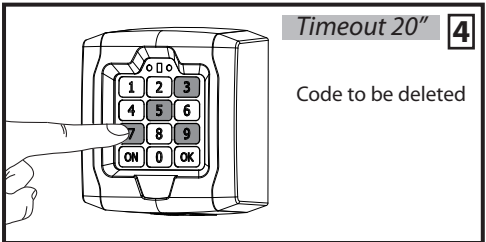
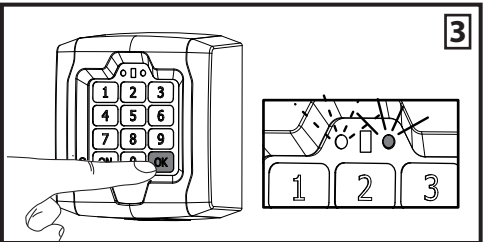
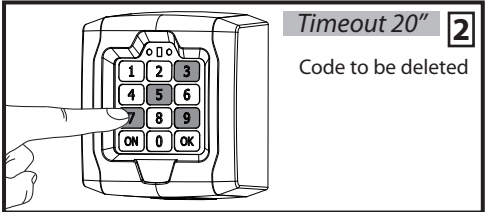
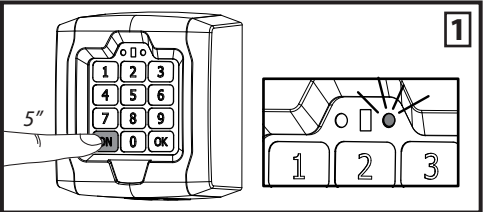


CHANGING A CODE



WARNING: the code consists of a sequence of no less than 4 and no more than 7 digits (in the range 0 to 9). Do not use codes with all the same numbers. (e.g. codes like 2222, 3333, 4444, 0000 etc.).

DELETING A CODE



WARNING: if you delete the last code, you will no longer be able to activate the relevant control unit. To restore operation, you must perform the total deletion procedure to erase all codes and repeat installation from the beginning. It is advisable to delete the codes of channels that are not associated with anything (e.g. code 2222, 3333, 4444, 0000 etc. when using a single control unit).



ADDING A CODE

1 5"

2 Timeout 20"
Enter password

3

4 Timeout 20"
(x4)
Code already exists in CH(1,2,...,9,0) to be activated.

5

6 Timeout 20"
Enter new code

7

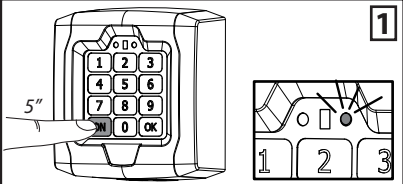
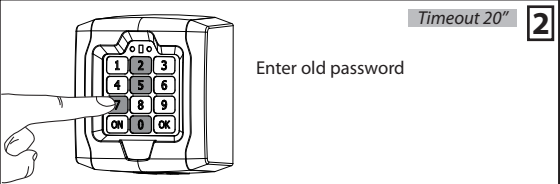
8 Timeout 20"
Enter new code

9 Code added!

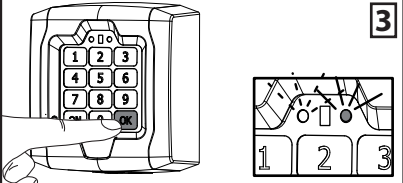
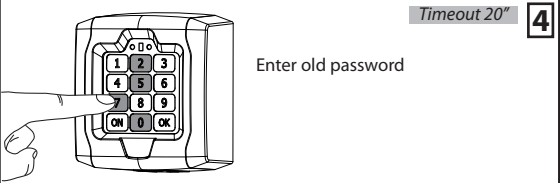
WARNING: To add a code, you need to know the system password. Q.BO TOUCH can handle up to 100 different codes. The new code will serve the same purpose as the existing code (activates the same channel).
ACHTUNG:



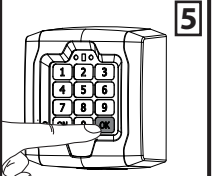
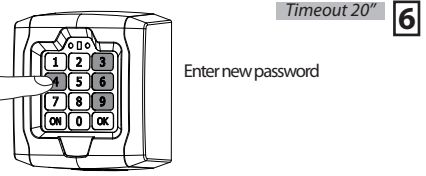
CHANGING THE PASSWORD

1  **2** 

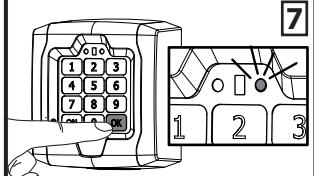
Enter old password

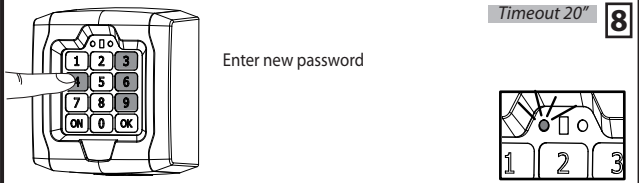
3  **4** 

Enter old password


5  **6** 

Enter new password

7 

8 

Enter new password

9 

Password changed!

DEFAULT PASSWORD:.....1234

NEW PASSWORD:.....